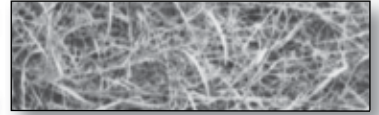
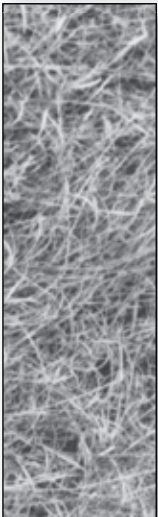


PHOTO GUIDE

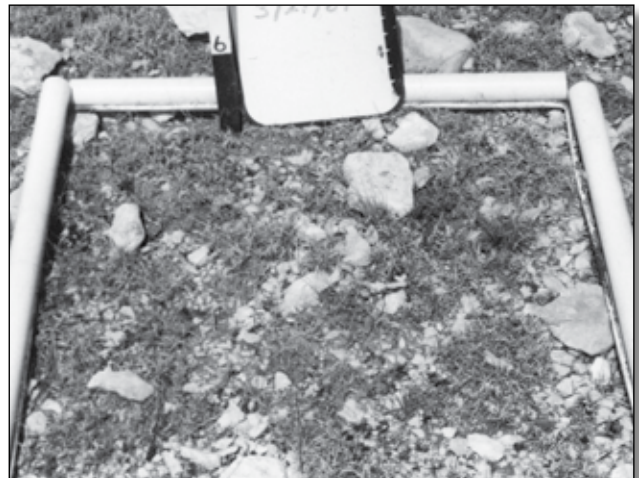


to Forage Supplies on Texas Rangelands

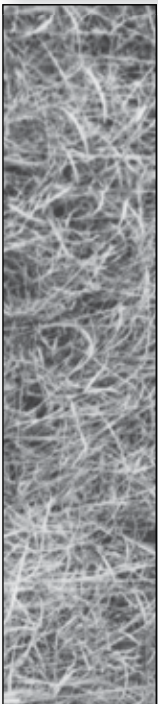
C.Wayne Hanselka and Allan McGinty*



Accurately determining stocking rate is important to successful range management. Because forage supplies on rangelands vary drastically across seasons and years, livestock numbers should be appropriate for present and projected forage supplies. This improves range conditions while maintaining maximum livestock production. Since most adjustments in stocking rate are based on experience and intuition, the accuracy of these adjustments varies considerably among individuals.



69 lb/ac
 hairy tridens, red grama



This photo guide can help you improve the consistency and accuracy of your stocking rate determinations. Pictures representing various forage quantities are matched to randomly placed plots in the pasture. These photos help you estimate pounds of forage per acre. This figure is then adjusted for moisture content and used to calculate the animal unit days of grazing available from the existing forage supply.



212 lb/ac
 buffalograss

The original photo guide was developed by Larry D. White, Extension Range Specialist Emeritus, and Calvin Richardson, currently with the Texas Parks and Wildlife Department.

*Extension Range Specialists, The Texas A&M University System.



416 lb/ac
buffalograss, curly mesquite



826 lb/ac
little bluestem, seep muhly, dropseed, sideoats grama



1090 lb/ac
threeawn, curly mesquite, Tx. wintergrass, doveweed



1247 lb/ac
Tx. wintergrass, dropseed



1484 lb/ac
sideoats grama, Tx. wintergrass



1756 lb/ac
curly mesquite, Tx. wintergrass



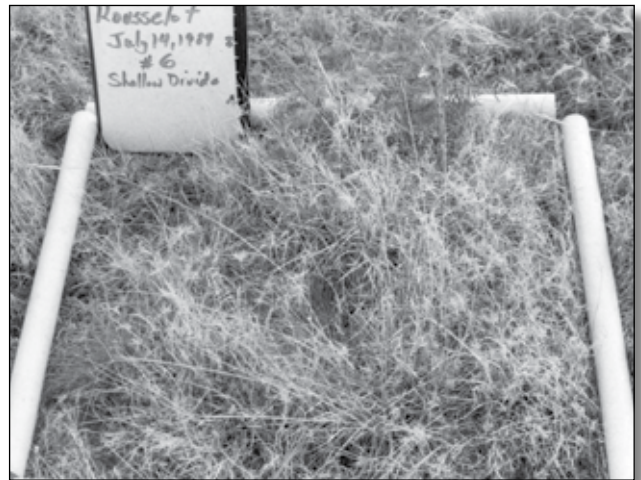
2264 lb/ac
curly mesquite, Tx. wintergrass, doveweed



2651 lb/ac
buffalograss, Tx. wintergrass



2806 lb/ac
sideoats grama, curly mesquite, Tx. grama, halls panicum



3001 lb/ac
curly mesquite, Tx. wintergrass (mesquite omitted)



3379 lb/ac
little bluestem, dropseed, sedge, anemone



3866 lb/ac
little bluestem, dropseed, sedge, anemone



4230 lb/ac
sideoats grama, Tx. wintergrass



4808 lb/ac
sideoats grama, Tx. wintergrass, white tridens



6936 lb/ac
kleingrass



7448 lb/ac
little bluestem, sedge, anemone

The information given herein is for educational purposes only. Reference to commercial products or trade names is made with the understanding that no discrimination is intended and no endorsement by Texas Cooperative Extension is implied.

Produced by Agricultural Communications, The Texas A&M University System
Extension publications can be found on the Web at: <http://tcebookstore.org>

Visit Texas Cooperative Extension at <http://texasextension.tamu.edu>

Educational programs conducted by Texas Cooperative Extension serve people of all ages regardless of socioeconomic level, race, color, sex, religion, handicap or national origin.

Issued in furtherance of Cooperative Extension Work in Agriculture and Home Economics, Acts of Congress of May 8, 1914, as amended, and June 30, 1914, in cooperation with the United States Department of Agriculture. Edward G. Smith, Director, Texas Cooperative Extension, The Texas A&M University System.
New